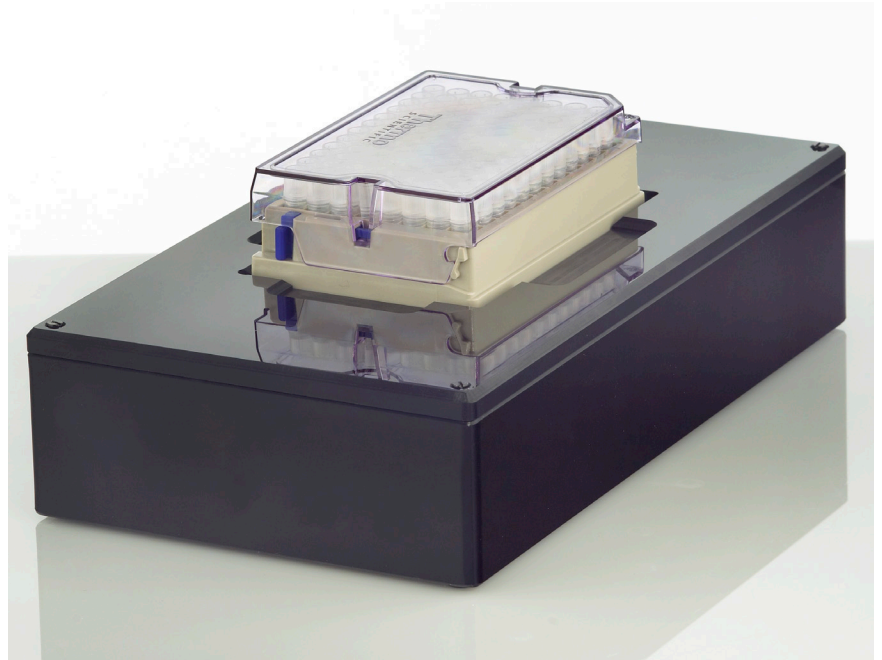


BIOREAD AV62 DEEP FOCUS SCANNER



KEY BENEFITS

- Scans tube racks; even in difficult lighting conditions
- Capable of scanning all SBS tube rack formats
- Compatible with all 2D Data Matrix barcoded tubes
- Easy to integrate into automated workflows
- DataPaq™ software with free lifetime upgrades
- Optional Cryoprotection™ and 1D linear barcode reading

EASY TO SET UP AND EASY TO USE

The BioRead Deep Focus Scanner (Deep Focus) offers easy, out-of-the-box set up and is delivered pre-calibrated and ready to scan. This instrument can scan all SBS format tube racks, regardless of their configuration or number of tubes, and comes ready for integration into automated workflows.

The Deep Focus is ideal for scanning tube racks that are not located directly on, or close to, the scanning window. The large depth of field ensures that even tubes that are several millimeters away can be read. If needed, the Deep Focus can be ordered with optional Cryoprotection and/or 1D linear barcode reading capability (**Figure 1**).

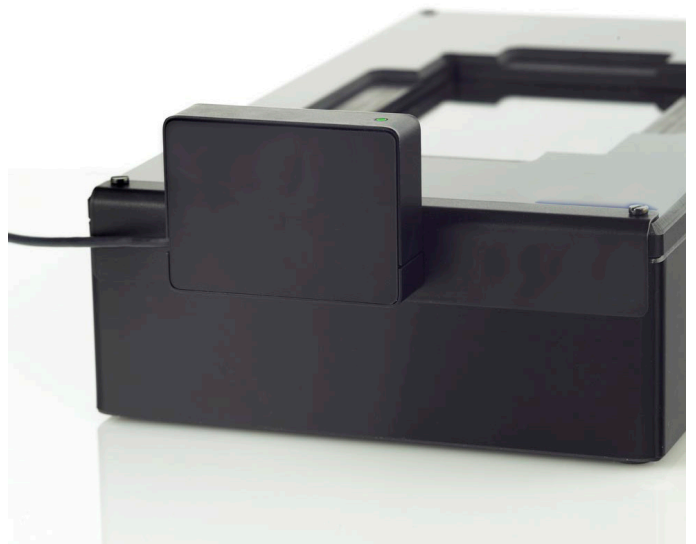


Figure 1. Deep Focus Scanner with 1D Linear Barcode option.

DATAPAQ SOFTWARE – DESIGNED TO READ 2D DATA MATRIX BARCODES

Written by our partner Ziath, DataPaq software is included with the Deep Focus. Instead of using a generic off the shelf algorithm designed to read barcodes in a supermarket, DataPaq software employs an algorithm developed to read 2D Data Matrix barcodes on tubes. DataPaq software displays the results of the scan (**Figure 2**) and identifies whether a tube was correctly scanned (green), is damaged (red) or missing (grey).

OPTIONS

Cryoprotection

The Cryoprotection option reduces condensation caused by cold tube racks. It uses no heat, no fans, and does not add any heat to the tube rack being scanned (**Figure 3**).

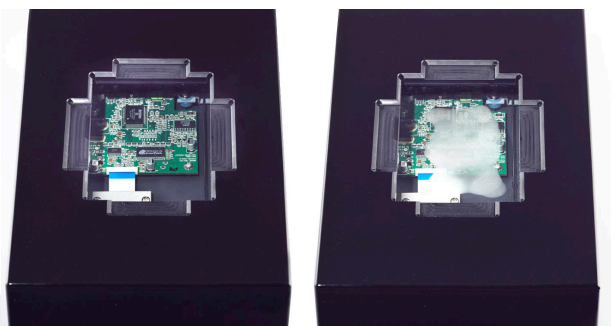


Figure 3. The Cryoprotection option reduces condensation caused by cold tube racks. It uses no heat, no fans, and does not add any heat to the tube rack being scanned.

1D Linear Barcode Scanner

The 1D Linear Barcode Option adds the ability to read 1D linear barcodes on the sides/edges of tube racks.

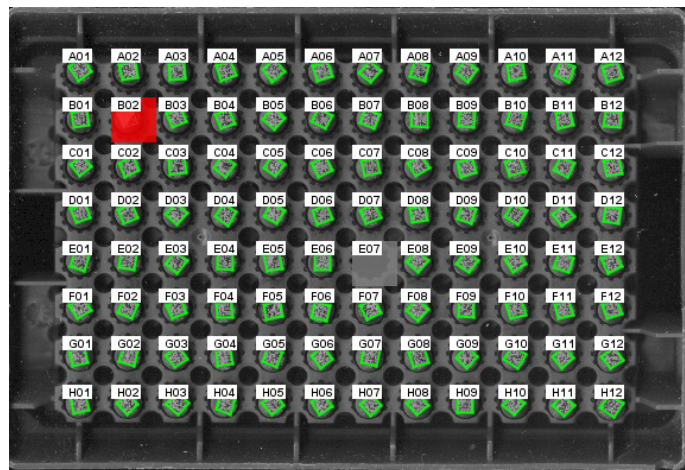


Figure 2. DataPaq software displays the results of the scan and identifies if a tube was scanned correctly (green), is damaged (red) or missing (grey).

INCLUDED WITH THE DEEP FOCUS

- BioRead AV62 Deep Focus Scanner.
- Power adaptor and cable.
- DataPaq software.
- USB cable.
- User Guide.

SPECIFICATIONS

- Dimensions: 165 mm x 288 mm x 65 mm (W x D x H).
- Total Weight: 1.4 kg.
- Power Source Input: 100-240 VAC.
- Power Source Output: 12 VDC, 1.5 A.
- Tube rack Compatibility: 24, 48, 96, 240, 384 SBS format tube racks.
- Data Matrix Barcode Compatibility: Compatible with all 2D barcoded tubes.
- Data Export: Excel, text, JSON, XML and image files.
- Operating System Requirements: Windows 7, 8, 10.
- Warranty period: 2 years.
- Software Upgrades: Free DataPaq software upgrades for life.
- Software: Includes remote control capability for integration applications.

